

HOME  
THE  
BEST  
PART  
OF THE  
DAY

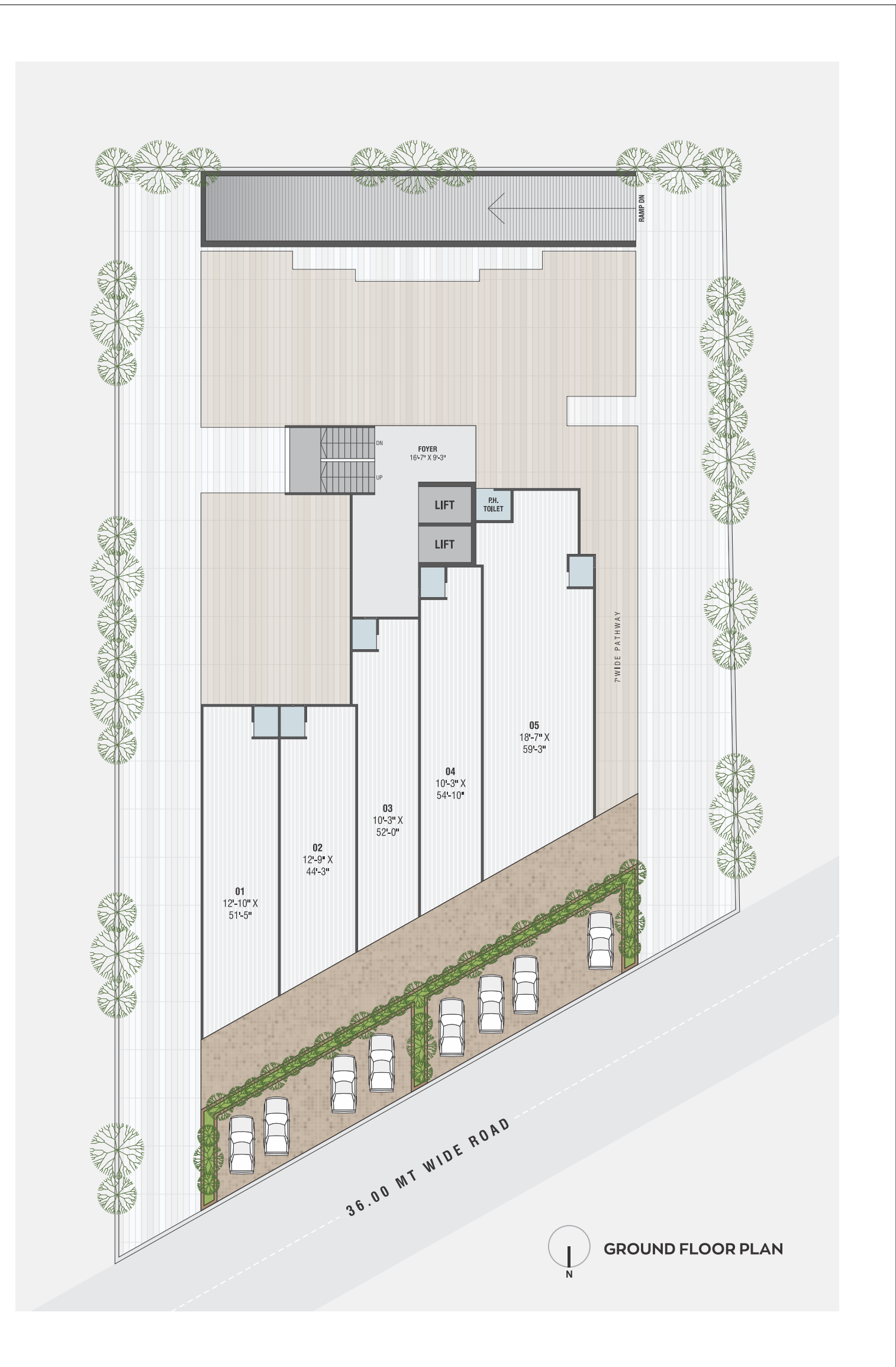




ANANTA  
ARISE









SPECIFICATIONS

**Structure**

R.C.C. frame work brick masonry wall

**Wall Finish**

Internal smooth plaster with white wash walls. External sand faced plaster with acrylic paint for walls

**Flooring**

Good quality Vitrified tiles in entire Apartment.

**Kitchen**

Colored glazed tiles in te kitchen

**Doors & Windows**

Elegant wooden door for the main entrance. Flushed doors for the entire home. Fully glazed windows with an aluminum section and marble sill

**Toilet**

Dado tiles in all bathrooms up to lintel level

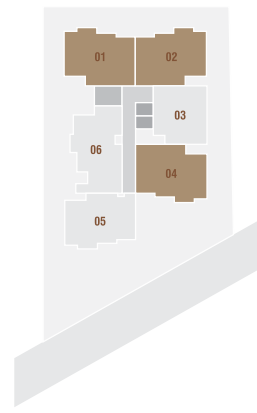
**Electrification**

Concealed copper wiring in the entire house.

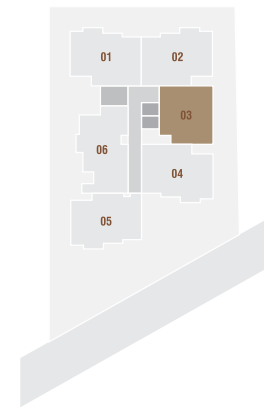




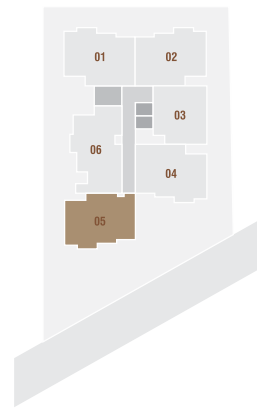
UNIT - 101, 102, 104



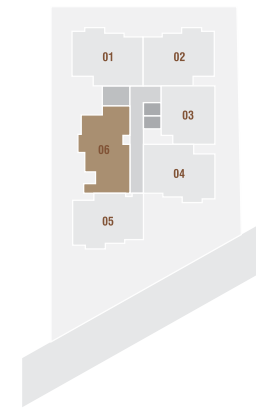
UNIT - 103



UNIT - 105



UNIT - 106



DEVELOPERS  
**ANANTA BUILDCON**  
MO : 9099 33 9985

DESIGN BY  
**RAJESH DARJI**



STRUCTURE ENGINEER  
**DIAGRID  
CONSULTANTS**

SITE ADDRESS : **ANANTA ARISE**, NEXT TO ISCON FLOWER, GHUMA BRTS ROAD, GHUMA, AHMEDABAD - 380 058.



**NOTES** ■ All rights are reserved to Developer for any changes in plan & specification. ■ Irregular payment shall cause cancellation of booking. ■ GEB, AUDA, Stamp duty, Legal charges, GST, Other Tax & Initial maintenance contribution will be levied extra. ■ Any additional liabilities due to change in the by laws, Stamp duty, Govt. Laws, shall be borne by member. ■ Change in external elevation shall not be permitted. Internal changes shall be done only with prior permission & shall be charged extra in advance. ■ Details & dimensions in brochure are indicative & for the tentative representation only which should not be treated as legal documents.

RERA NO : PR / GJ / AHMEDABAD / DASKROI / AUDA / MAA09308 / 121121 ● Website : [www.gujrera.gujarat.gov.in](http://www.gujrera.gujarat.gov.in)